



Term One - Week Three

Gulgong Pre-School Newsletter

Ph. 02 63741475

P.O. Box 147,

GULGONG NSW 2852

Admin Email : gulprsch@bigpond.net.au

Director's Email : director@gulgongpreschool.com.au

Director's: Sam Seis & Rachel Peninton

President: Reanne O'Rourke

Secretary: Amanda Searle

Website: www.gulgongpreschool.com.au

Dear Parents,

A huge welcome to Pre-School for 2024! We hope our children and families had an enjoyable and relaxing summer break. It's been lovely connecting/reconnecting with our little people and their families over the past couple of weeks. As Early Childhood Teachers, forming trusted relationships with our children so that they feel safe, secured, and loved in their new environment, is what we are passionate about and believe is most important. Once children feel emotionally supported, they're then ready to develop the skills they need to learn.

We hope everyone is ready for a wonderful year ahead with us. 2024 is going to be fabulous!

Staff for this year include;

Sam Seis & Rachel Peninton- Directors/Teachers

Linda Oakhill- Office Manager

Wendy Harris & Eliza Quarmbly- Teachers

Belinda Buckle- Sustainability Leader

Karen Hampton, Leah Oakhill, Darcy Turner, Amanda Puckeridge,
Emily Makepeace and Chloe Young Riley- Assistant Educators

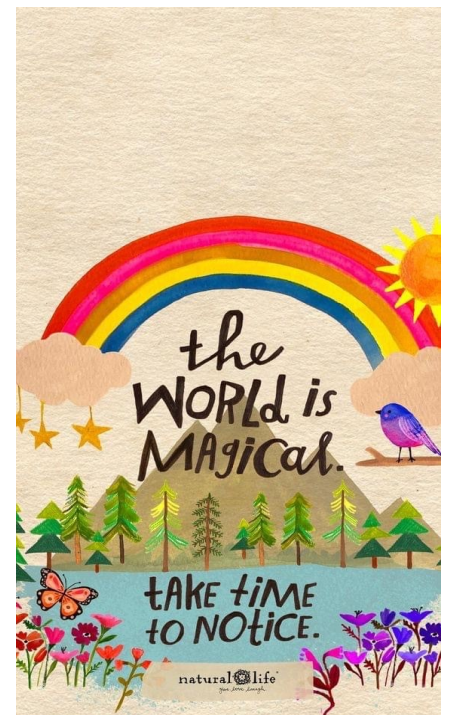
Amanda Meers and Michelle Gaudry- Casual Educators

Veronica Martin- Cleaner

Happy Pre-Schooling,

Sam Seis & Rachel Peninton

Directors



“When children have positive experiences and can exercise agency, they develop an understanding of themselves as significant, respected and feel a sense of belonging”

Outcome 1 Children have a strong sense of identity—pg 30 of Volume 2 of

Early Years Learning Framework

Yindyamarra

'Respect, be gentle, polite, honour, do slowly'

We acknowledge the traditional owners of the land on which we are located, the people of the Wiradjuri nation and extend that acknowledgement to elders past and present and all Aboriginal & Torres Strait Islander peoples.



Our Sustainable Future

We are busy setting up our classroom recycling systems and will be learning how to use them through play and daily practice. We will also explore Planet Ark's "Check it Before you Chuck It" campaign which will help us to identify which items can be recycled.

In the coming weeks, we will also be exploring a range of seasonal gardening activities, and with a little help from our Pre-School worm farm, we will be learning all about compost.

Recycling, gardening, and composting will continue to form part of our everyday practices reflecting our Pre-School philosophy to "foster an environmentally responsible community that promotes a sustainable future".

Belinda Buckle,
Sustainability Leader

Our Program

OUR DAILY PROGRAM

Our daily program will be shared with you on Storypark, programming is done once a week. Here you will see what we get up to at preschool each day and it's also an invitation to add ideas, suggestions and comments regarding your child's interests, learning goals and experiences. At times the program is not followed exactly as spontaneous experiences and children's interests come up during the day and sometimes we head in a different direction.

A little about our process...

Our curriculum is written by our teachers each week. We use a combination of observations of the children, developmental assessments, family input and the children's input to program activities and experiences. We offer a play based program, where the children learn through all of their senses, through social interactions and by intentional teaching from educators. We follow The Early Years Learning Framework, The National Quality Standards and the Education and Care Services National Regulations. Our curriculum and practice is guided by developmental theorists and research, our educators attend regular seminars and workshops to keep their knowledge up to date.

LEARNING AND DEVELOPMENT

Your child's learning and development will be assessed using observations and developmental checklists throughout the year. Progress reports will be sent home at the end of term 2 and term 4. Transition to school reports will be completed in term 4 for children going to school the following year.

PARENT TEACHER MEETINGS

We are always available to meet with you and encourage you to make an appointment with your child's teacher for a meeting in person or by phone if you would like further feedback or have any concerns. You can also have private conversations with teachers through Storypark.

Storypark

Upcoming Events

Sat 17th Feb- Gulgong Show "Life on the Farm"

Friday 29th March—Good Friday

Sunday 31st March—Easter Sunday (followed by Easter Monday Public Holiday)

Monday 8th & Thursday 11th April—"Things that Creep and Crawl" incursion

Early Years Learning Framework

We follow the national “**Early Years Learning Framework**” (EYLF) to guide us in developing learning programs responsive to your child’s needs, interests, strengths and abilities. The EYLF has been designed for use by Early Childhood staff working in partnership with families, children’s first and most influential educators.

The EYLF has a specific emphasis on **play-based learning** and recognises the importance of early literacy, numeracy, communication, language, social and emotional development. It supports the following learning outcomes for children:

- Children have a strong sense of identity
- Children are connected with and contribute to their world
- Children have a strong sense of wellbeing
- Children are confident and involved learners
- Children are effective communicators

Policy Manual

A copy of our Policy Manual is in the Entry Foyer. These Policies are constantly being reviewed and updated in line with the National Quality Standards. Under seven quality areas:

1. Educational program and practice
2. Children’s health and safety
3. Physical environment
4. Staffing arrangements
5. Relationships with children
6. Collaborative partnerships with families and communities
7. Governance and leaderships .

Please feel free to make any comments, suggested changes or inclusions using our Quality Improvement Plan feedback forms located in the foyer.

Lunch

We have 2 meal times at Pre-School, Morning Tea and lunch time. During these times we encourage good eating habits and manners. Both morning tea and lunch times provide valuable opportunities for enriching the children’s social development through interactions with other children and staff. Children will need their own water bottle for individual use. This can be topped up throughout the day. We recommend packing a healthy lunch, with no eggs or nuts please.



Arrivals and Departures

We have two entry gates, one by the ramp and one at the steps. These will be unlocked so please feel free to explore our gardens while you wait for us to open our doors at 9:15am.

We have a bike rack on the park side of the building that you’re welcome to use.

Please sign your children in and out of Pre-School in the sign in book on the counter in the entry foyer.

Our licensed opening times are 9:15am–3:15pm.

Please do not open our gate for any child unless accompanied by their parent. Thank you

Affordable Pre-School for 2024

The NSW Government is providing fee relief to families through the Start Strong Affordable Pre-School initiative as part of their Early Years Commitment.

If your child will be attending another service that offers fee relief, you will need to complete a Fee relief declaration form and will need to choose which service you would like to receive fee relief from.

If you claim the Fee relief from us our FEES will be **FREE**. If you are NOT claiming Fee relief our fees will be \$40/day or \$20/day if you are on a low income.



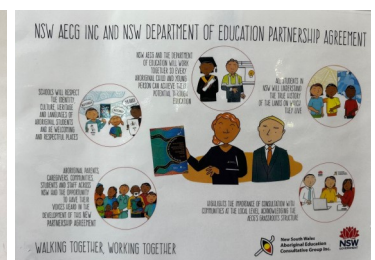
Pre-School Committee Meeting

Our Pre-School **Committee** meets monthly.

Our AGM will be held at **6:30pm, Thursday 14th March** at Pre-School. Everyone is welcome to attend.

Pre-School are an active member of the **Aboriginal Education Consultive Group** which meet monthly to discuss First Nation people’s perspectives on education within our local area. The AECG welcomes any new members or visitors to come along to meetings.

The next AECG meeting is held at **4pm, Wed 14th February** at Gulgong Highschool.



What's been happening in our classrooms?

We are pleased to report that the children have settled in well to Pre-School. This is sometimes not an easy task for children with their first big step away from home. For this reason, the first month or so at Pre-School is used as a settling in period where the activities and instructions are kept as simple as possible, and a routine is maintained so that the children feel some security in knowing what comes next.

Indoors, the activities are designed to build on the children's fine motor co-ordination and hand-eye movements. These have been developed through painting, pasting, threading, playdough and puzzles.

During mats times, our music and Language sessions help to develop concentration skills, and repetition has been the main objective to enhance rhythm and language.

Outdoors, the children have been enjoying the playground equipment, mud kitchen area, water play, see-saw, sand-pit, slippery dip, boat and bikes. Activities have centered round the use and development of large muscles. These include running, jumping, climbing, and digging, as at this stage the children gain great enjoyment from these simple tasks.

While we've been settling into our days at Pre-School, we've been focusing on our art contribution for the local show. Each class has been busy creating beautiful artworks to add to our display. This year's theme "Life on the Farm" connects to many of our country kids and has prompted many interesting discussions about farms, what can be grown on farms and what some of our children's family farms look like.

If you're heading to show this weekend, make sure to check out our display which will be located in the art pavilion!



Term Dates 2024

Term One	Tuesday 30th January—Friday 12th April
Term Two	Monday 29th April—Friday 5th July
Term Three	Monday 22nd July—Friday 27th September
Term Four	Monday 14th October—Friday 20th December